



PARK PLACE

Plan 1977 • 1,977 square feet



ELEVATION A



ELEVATION B



ELEVATION C



TEXAS-HOMES.COM

*These are artist renderings and actual elevation detailing are subject to change.
Refer to Sales Counselor and review actual blueprint. Rev. 04/12/18*



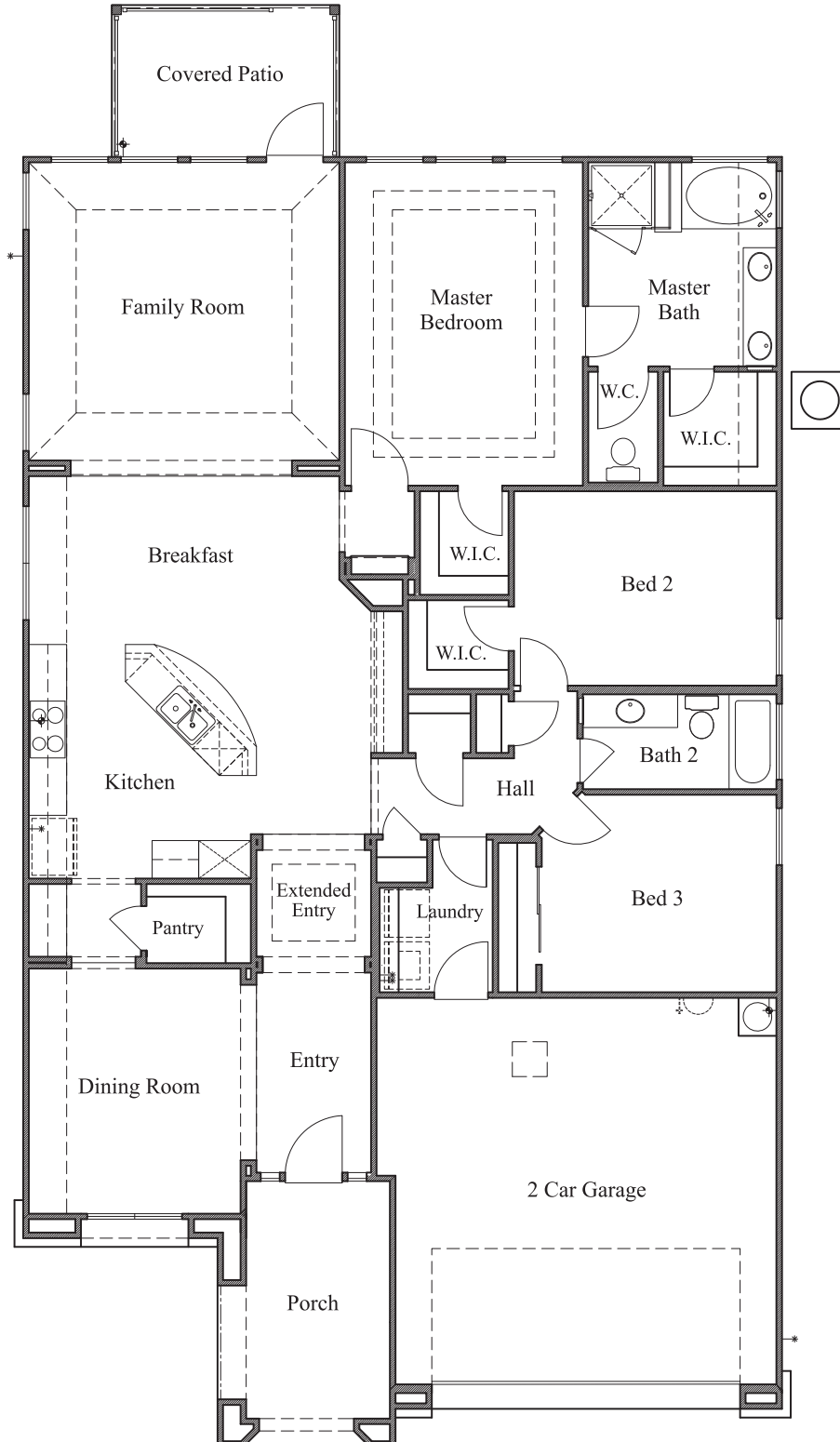
TEXAS HOMES

Texas Built • Texas Owned • Texas Proud



PARK PLACE

Plan 1977 • 1,977 square feet



TEXAS-HOMES.COM

Actual room dimensions may vary. See a sales counselor for more information. Rev. 04/12/18



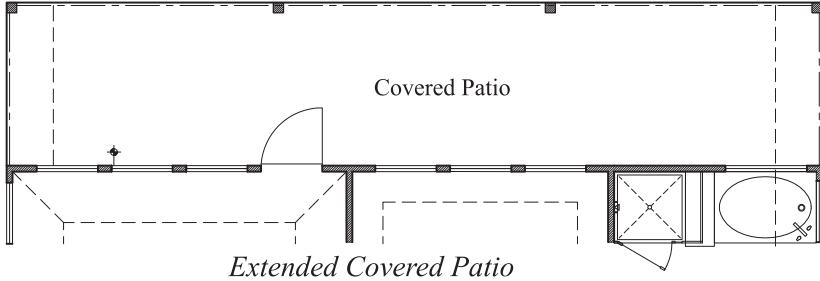
TEXAS HOMES

Texas Built • Texas Owned • Texas Proud

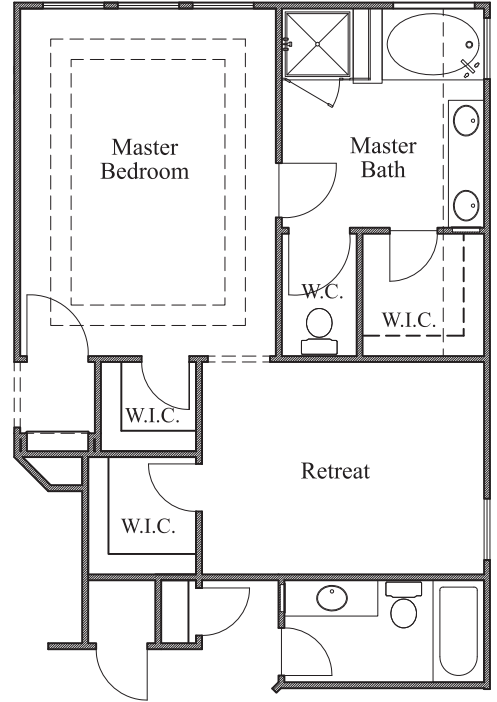


PARK PLACE

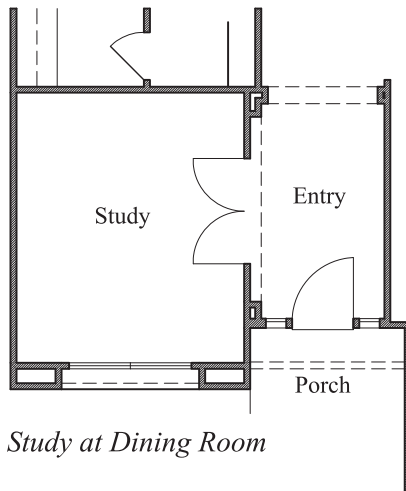
Plan 1977 • Options



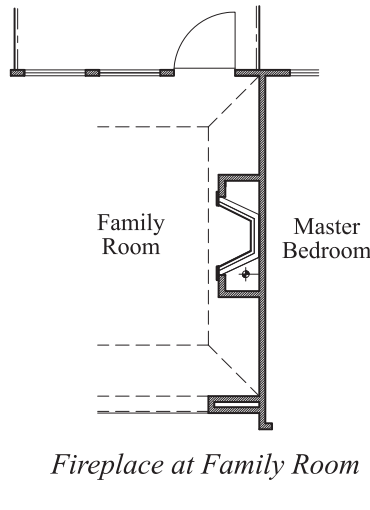
Extended Covered Patio



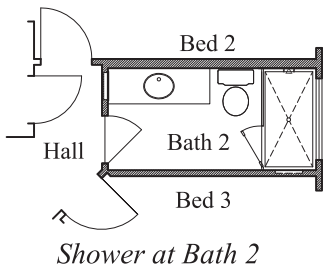
Retreat at Bed 2



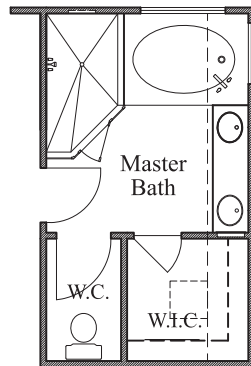
Study at Dining Room



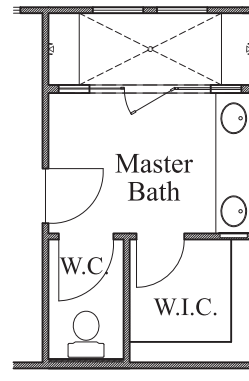
Fireplace at Family Room



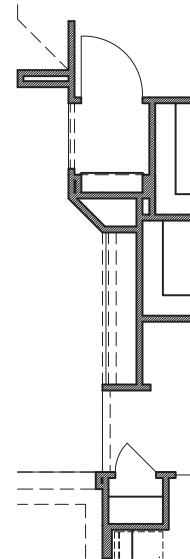
Shower at Bath 2



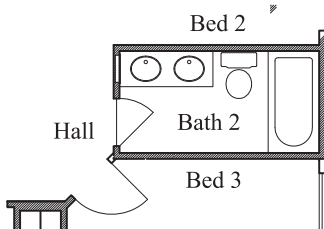
42 x 84" Mudset Shower with Drop In Tub at Master Bath



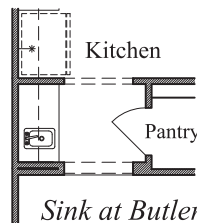
42 X 119" Mudset Shower at Master Bath



Base & Upper Cabinets at Kitchen/Breakfast



Double Vanity at Bath 2



Sink at Butler's Pantry



TEXAS-HOMES.COM

Actual room dimensions may vary. See a sales counselor for more information. Rev. 01/03/19



TEXAS HOMES

Texas Built • Texas Owned • Texas Proud