



AGAVE TRACE

Plan 2830 • 2,830 square feet



ELEVATION A



ELEVATION B



ELEVATION C



TEXAS-HOMES.COM

*These are artist renderings and actual elevation detailing are subject to change.
Refer to Sales Counselor and review actual blueprint. Rev. 09/30/19*



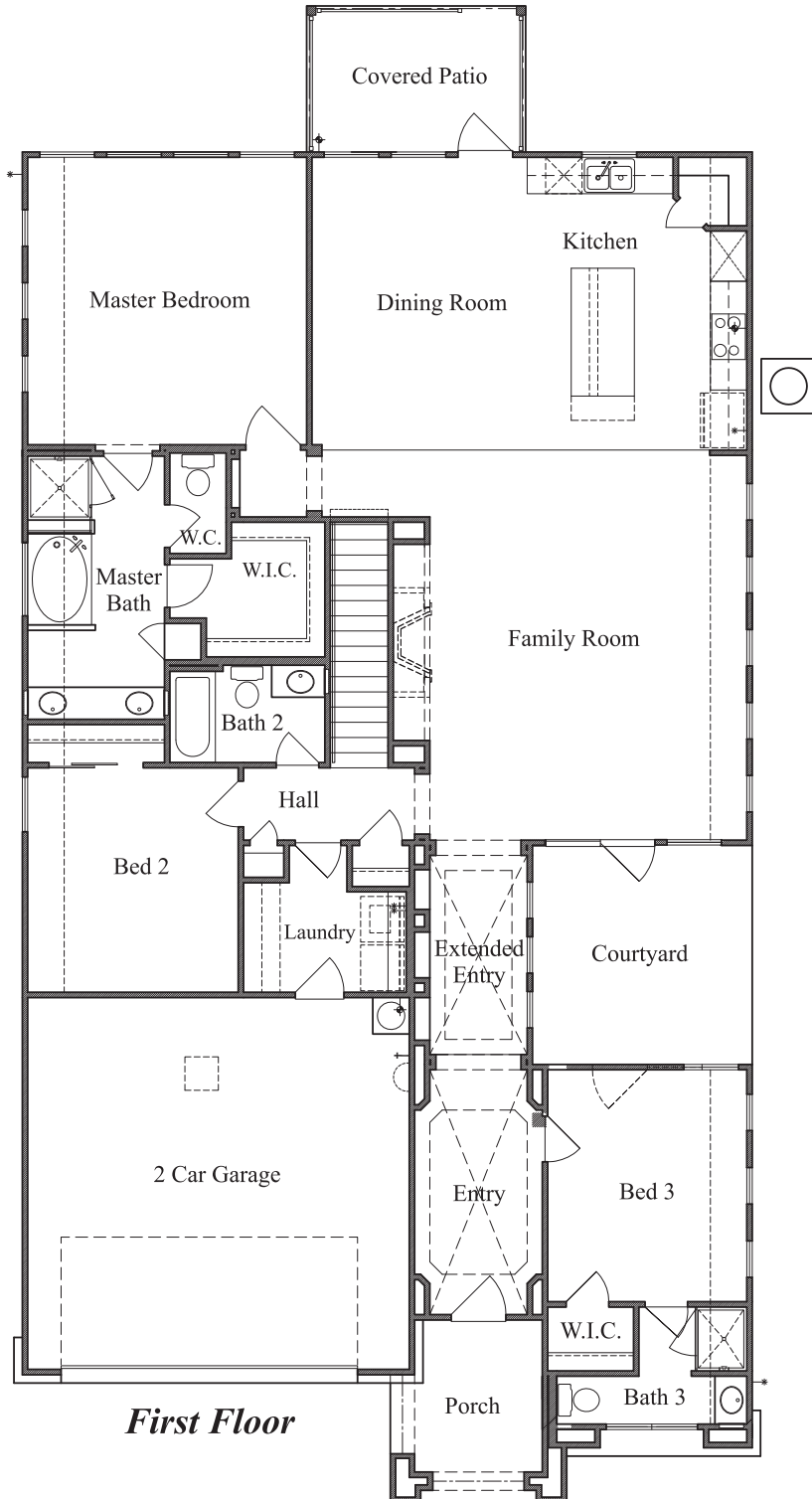
TEXAS HOMES

Texas Built • Texas Owned • Texas Proud

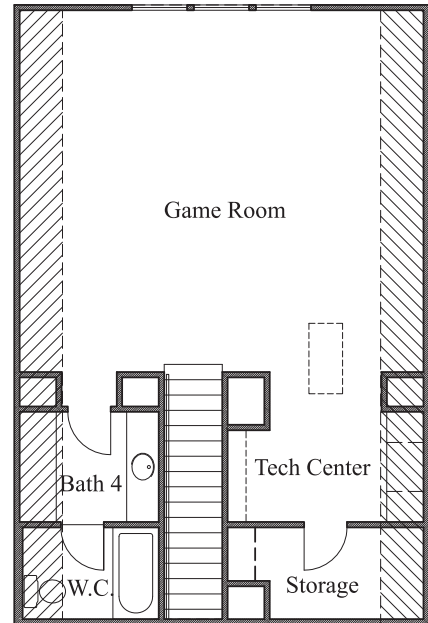


AGAVE TRACE

Plan 2830 • 2,830 square feet



First Floor



Second Floor



TEXAS-HOMES.COM

Actual room dimensions may vary. See a sales counselor for more information. Rev. 10/22/21



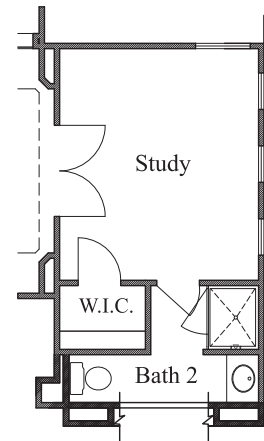
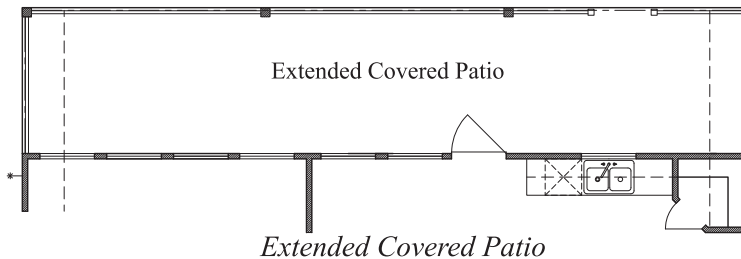
TEXAS HOMES

Texas Built • Texas Owned • Texas Proud

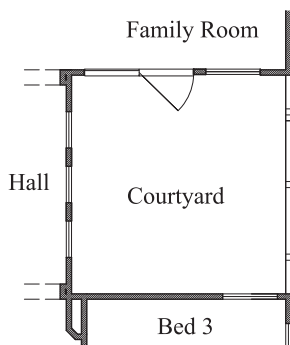


AGAVE TRACE

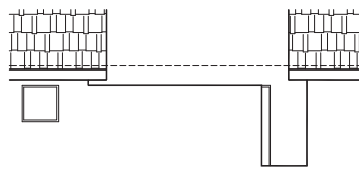
Plan 2830 • Options



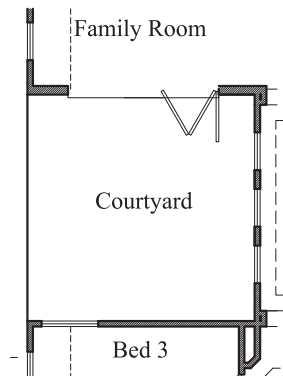
Study at Bed 3



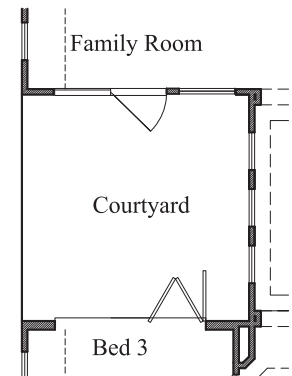
8' Stucco Wall at Courtyard



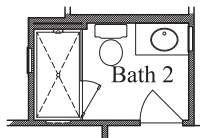
*8' Stucco Wall at Courtyard
partial elevation*



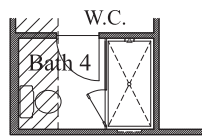
*8' Accordion Door
at Family Room*



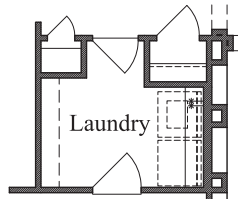
*8' Accordion Door
at Study/Bed 3*



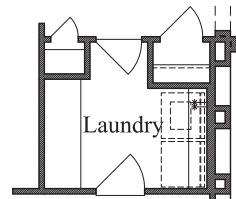
Shower at Bath 2



Shower at Bath 4



*Upper Cabinets
at Laundry*



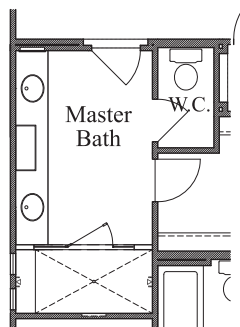
*Base Cabinets
at Laundry*



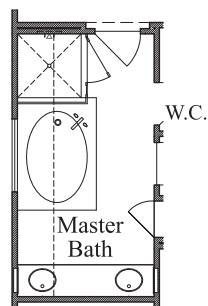
*Extended Island
at Kitchen*



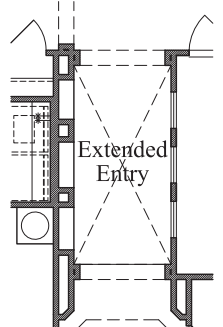
*Veggie Sink
at Island*



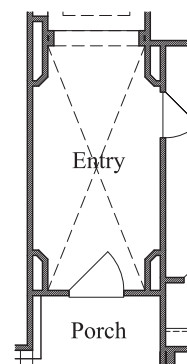
*42 x 90" Mudset Shower
at Master Bath*



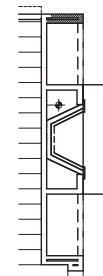
*42 x 42" Mudset
Shower with Drop In Tub
at Master Bath*



*Groin Vault Ceiling
at Extended Entry*



*Groin Vault Ceiling
at Entry*



*Fireplace at
Family Room*



TEXAS-HOMES.COM

Actual room dimensions may vary. See a sales counselor for more information. Rev. 10/22/21



TEXAS HOMES

Texas Built • Texas Owned • Texas Proud