

# PLAN 3245 ~ ELEVATIONS



ELEVATION A



ELEVATION B



ELEVATION C



REV. 08.06.25

Floorplans and elevations are an artist's rendering for illustrative purposes only and may not accurately reflect the construction plans or final product. Texas Homes reserves the right to make changes in the plans, specifications, and to substitute materials of similar quality. Floor plans, dimensions, features, options, elevations, square footages, specifications, materials and availability of homes within a neighborhood are all subject to change without notice or obligation. Prospective buyers should consult with a Texas Homes Sales Counselor for more information.



**TEXAS HOMES**

Texas Built • Texas Owned • Texas Proud

[TEXAS-HOMES.COM](http://TEXAS-HOMES.COM)



# PLAN 3245 ~ ELEVATIONS



ELEVATION D



ELEVATION E



REV. 08.06.25

*Floorplans and elevations are an artist's rendering for illustrative purposes only and may not accurately reflect the construction plans or final product. Texas Homes reserves the right to make changes in the plans, specifications, and to substitute materials of similar quality. Floor plans, dimensions, features, options, elevations, square footages, specifications, materials and availability of homes within a neighborhood are all subject to change without notice or obligation. Prospective buyers should consult with a Texas Homes Sales Counselor for more information.*



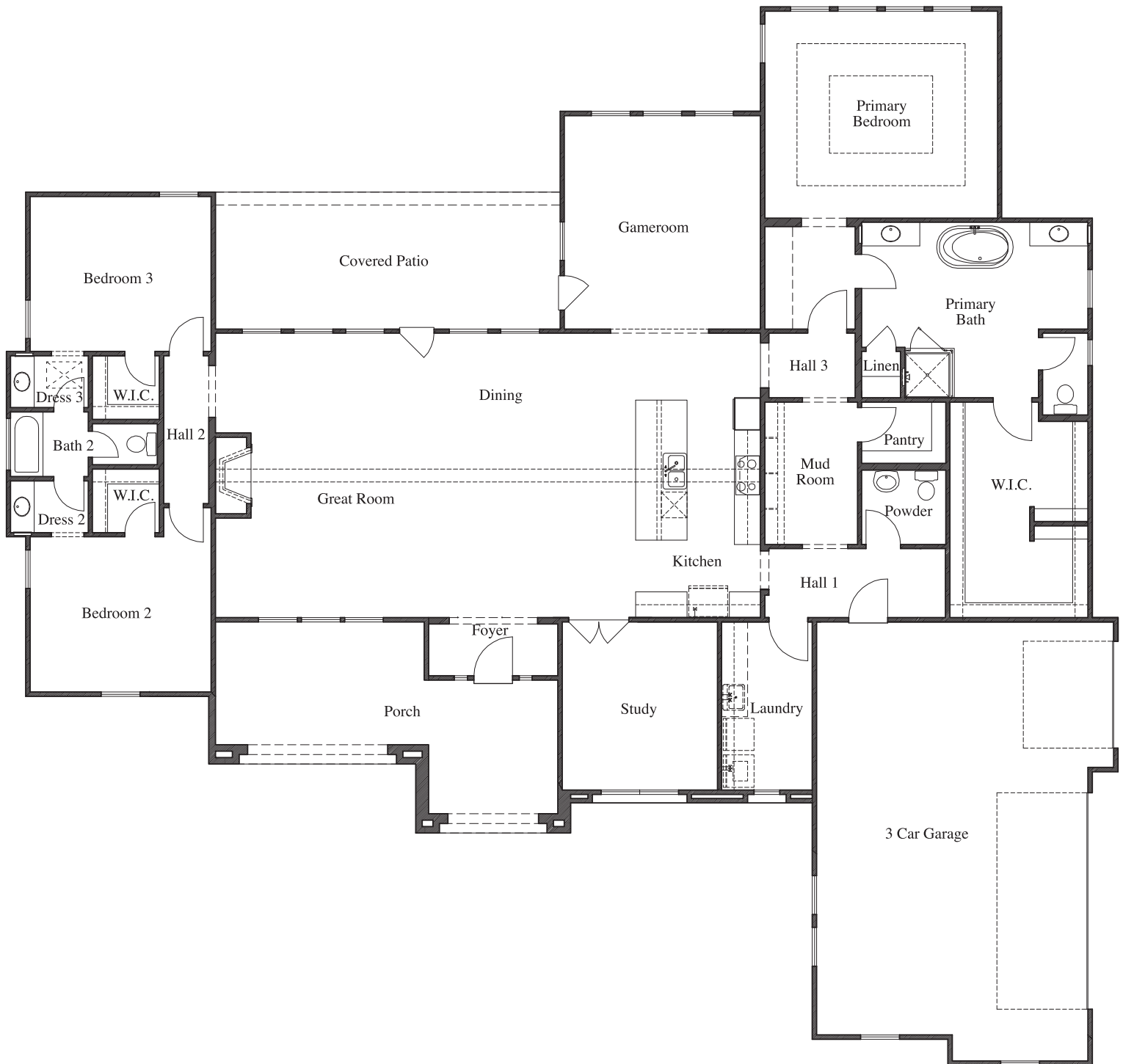
**TEXAS HOMES**

*Texas Built • Texas Owned • Texas Proud*

[TEXAS-HOMES.COM](http://TEXAS-HOMES.COM)

# PLAN 3245

3,245 Sq. Ft. | 1 Story | 3 - 4 Bedrooms, 2.5 - 3.5 Baths, 3 Car Garage



REV. 08.06.25

Floorplans and elevations are an artist's rendering for illustrative purposes only and may not accurately reflect the construction plans or final product. Texas Homes reserves the right to make changes in the plans, specifications, and to substitute materials of similar quality. Floor plans, dimensions, features, options, elevations, square footages, specifications, materials and availability of homes within a neighborhood are all subject to change without notice or obligation. Prospective buyers should consult with a Texas Homes Sales Counselor for more information.

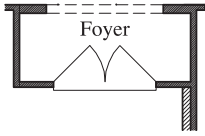


**TEXAS HOMES**

Texas Built • Texas Owned • Texas Proud

[TEXAS-HOMES.COM](http://TEXAS-HOMES.COM)

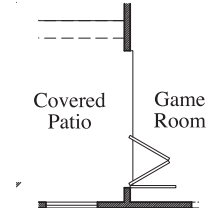
# PLAN 3245 ~ OPTIONS



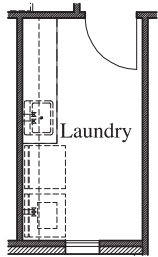
*Double Doors at Front Porch*



*8' Accordion Door  
at Great Room*



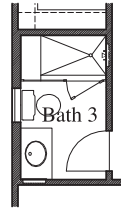
*8' Accordion Door  
at Game Room*



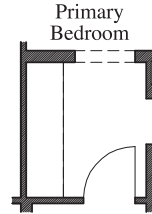
*Cabinets at Laundry*



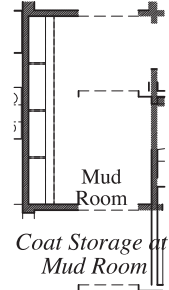
*Mudset Shower with  
Seat & Niche at Bath 2*



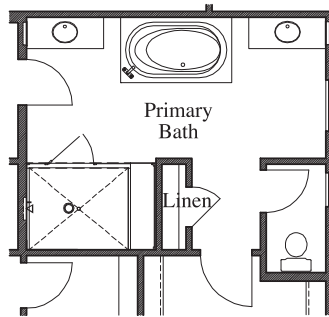
*Mudset Shower with  
Seat & Niche at Bath 3*



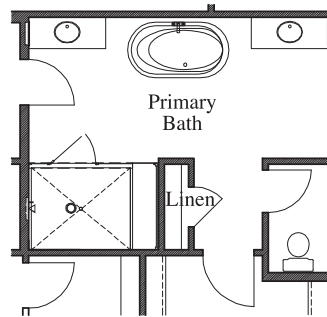
*Linen at Primary  
Bedroom*



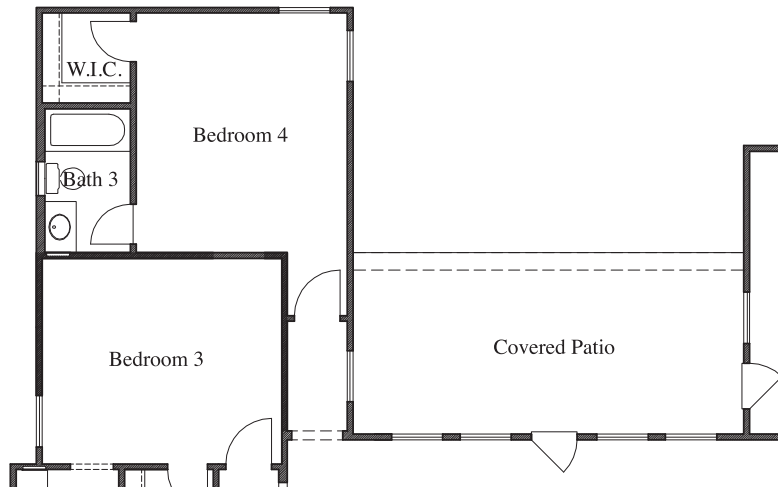
*Coat Storage at  
Mud Room*



*Drop-In Tub with Large Mudset Shower  
with Seat & Niche at Primary Bath*



*Large Mudset Shower with  
Seat & Niche at Primary Bath*



*Bedroom 4 with Bath 3*



REV. 08.06.25

Floorplans and elevations are an artist's rendering for illustrative purposes only and may not accurately reflect the construction plans or final product. Texas Homes reserves the right to make changes in the plans, specifications, and to substitute materials of similar quality. Floor plans, dimensions, features, options, elevations, square footages, specifications, materials and availability of homes within a neighborhood are all subject to change without notice or obligation. Prospective buyers should consult with a Texas Homes Sales Counselor for more information.



**TEXAS HOMES**

*Texas Built • Texas Owned • Texas Proud*

[TEXAS-HOMES.COM](http://TEXAS-HOMES.COM)